

PENETRON SINGAPORE NEWS FLASH

[Home](#) | [Products](#) | [Projects](#) | [What is Penetron?](#)



**DOWNLOAD
PENETRON
BROCHURE**

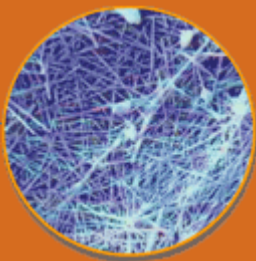
SUBSCRIBE

INSIDE THIS ISSUE

- [PENETRON SINGAPORE](#)
- [Focus: projects in singapore](#)
- [Recently completed projects: Changi Airport Terminal](#)
- [VivoCity, 2004](#)
- [New projects - The Sail](#)
- [Marina Bay Financial Center \(MBFC\)](#)
- [FoodXchange@ Admiralty\)](#)
- [Contact details](#)

FAST FACTS

The presence of Penetron Crystals in concrete protects concrete against chemical attack.



An intricate web of insoluble crystals forms in the presence of Penetron and H₂O creating a permanent protective seal

Internal Waterproofing for Concrete

Penetron has been a leading Crystalline waterproofing brand in the Singapore market for over a decade and continuous to lead the market with a string of prestigious ongoing projects and numerous high profile specifications in the city-state's ambitious development plans. Read on!



PENETRON SINGAPORE

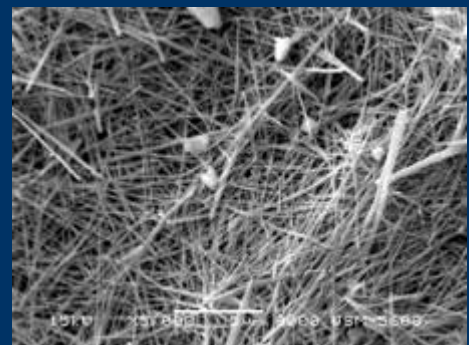
After more than 12 successful years in the Singaporean market and riding on a multitude of prestigious projects, excellent application work and product performance, Penetron has clearly established itself as the No. 1 choice on construction sites around the country. Many projects in Singapore face tremendous water pressure as they are built on reclaimed land, and traditional waterproofing systems are falling short. Penetron's success has contributed to a paradigm shift away from applying a temporary superficial product towards really enabling the concrete to protect itself long term, by means of a crystalline admixture.

In the wake of these achievements, we decided to establish Penetron Singapore Pte Ltd in 2006, so as to further strengthen our position and the Penetron brand name in the market.

Gary Loh, who played a big role in Penetron's success here and became General Manager of Penetron Singapore, commented that "this setup further displays Penetron's dedication and long-term commitment to the Singapore market and the entire region by providing superior waterproofing products that are trusted and appreciated by architects, designers, consultants, engineers, developers and applicators the world over."

Besides the distribution of the Penetron range of products, Penetron Singapore provides technical support to architects and engineers for all their waterproofing needs.

The Penetron system has proven its performance and superiority in a variety of independent laboratory tests and convinced on a large number of jobsites in Singapore gaining the trust and confidence of many satisfied clients including Ascendas, CapitaLand, CDL, CPG Consultants, Far East, Maple Tree, and many more.



A small selection of recent works in Singapore is featured below in our Focus. For a partial list of major projects using Penetron® Admix in Singapore [click here](#).

Focus: projects in singapore

Recently completed projects: Changi Airport Terminal 3, 2001

Singapore's award winning Changi Airport, built on reclaimed land, had its entire Terminal 3 substructure treated using Penetron® Admix and other components of the Penetron® System, such as Penetron® slurry and Penecrete Mortar.



The crack bridging abilities of the Penetron® System have been superbly demonstrated on this project. After the screeds were removed, the Terminal 3 team was able to witness first hand the effectiveness of Penetron® Admix and see how leaking cracks dried up in a matter of days. The success on the project and the performance of the Penetron® System resulted in a strong recommendation ([click here to read recommendation](#)) by the Vice President of the Airport Development Division of CPG consultants. Due to the excellent performance of Penetron on Changi Terminal 3 the following projects were also awarded and waterproofed with Penetron® Admix: The People Mover System, the Baggage Terminal, the 2nd Taxi Bridge and the Aircraft Parking Apron.



VivoCity, 2004

With more than 1 million sq ft of lettable space, VivoCity is the largest multi-experiential retail and lifestyle destination in Singapore. Offering a diverse mix of up to 300 retail, food and beverage and entertainment outlets, including the largest multiplex with 15 screens and 2,173 seats by multiplex giant, Golden Village as well as a new concept hypermarket by retail leader, Dairy Farm, VivoCity boasts a stimulating mix of year-round events and activities that will define it as Singapore's ultimate lifestyle destination.

Designed by renowned Japanese architect, Toyo Ito, VivoCity's unique design incorporates breathtaking open spaces for waterfront alfresco dining and the staging of world-class events and performances in an outdoor amphitheatre.

The entire basement slab, (45,000 cubic meter of concrete) was waterproofed with Penetron Admix.



New projects - The Sail, 2007

The Sail @ Marina Bay is a waterfront lifestyle condominium located in the Marina Bay area in Singapore. It is expected to be completed in 2009. The structure of The Sail is 245 meters and 70 stories high and will be Singapore's tallest condominium/apartment and among the top 10 tallest residential buildings in the world.

The condominium was designed by Norwegian-American architect Peter Pran, who gave the

buildings a glass facade, sculpted Marina Bay Tower to look like a sail, and configured the complex representative of a huge canyon, reflecting his utilization of inspirations by the sun, the wind, and the water respectively.

The site area is 9,090.9 square meters with a maximum permissible gross floor area of 118,182 square meters. It has 29,000 square feet of retail space, and an underground link to the Raffles Place MRT Station. The entire basement is waterproofed with Penetron® Admix.



Marina Bay Financial Center (MBFC), 2007

Centrally located on prime waterfront space in Singapore's new financial district, Marina Bay Financial Centre, developed by a joint venture by three of Asia's most experienced and trusted property developers – Cheung Kong Holdings, Hongkong Land and Keppel Land, is designed by world-renowned architect, Kohn Pedersen Fox Associates PC.

Surrounded by cultural, entertainment and leisure facilities, Phase One of the integrated development comprises 250,000 sq. m of grade A office space, high-end residences and complementary retail facilities.

The commercial towers, tailored for the financial sector, offer large open-floor plans and state-of-the-art services and amenities, whilst Marina Bay Residences include a collection of 428 luxuriously appointed apartments. Soaring 55 stories, Marina Bay Residences' waterfront facing units range from one- to four-bedroom apartments as well as penthouses and are complemented by a range of recreational facilities.

Penetron® Admix has been chosen to waterproof the entire basement.



FoodXchange@Admiralty, 2007

This is the latest development by Ascendas known as Foodxchange, located on a 3-hectare site at Admiralty Road West. FoodXchange@Admiralty will release a total of 72,000 sqm of quality space in 284 units when ready by the end of 2008. This makes it the largest multi-tenanted food facility currently available in the market. The 7-story ramp-up facility is targeted at food industrialists, mainly small- and medium enterprises (SMEs), in food manufacturing and warehousing.



This project has just been awarded to Penetron and some 13,000 cubic meters of concrete will be waterproofed with Penetron® Admix. Further the usage of other Penetron products on this project involving Peneseal Pro and Peneseal FH sealers on all intermediary floors is currently under discussion.

Contact details

PENETRON SINGAPORE PTE LTD.

514 Chai Chee Lane
#03-01 Bedok Industrial Estate
Singapore 469029
Tel: +65 6497 4408
Fax: +65 6569 4546
Contact: Mr. Gary Loh
Email: gary@penetron.com.hk

ICS/PENETRON INTERNATIONAL LTD

45 Research Way - Suite 203
East Setauket, NY 11733, USA
Tel: 631-941-9700
Fax: 631-941-9777
Email: info@penetron.com
www.penetron.com

www.penetron.com

T O T A L C O N C R E T E P R O T E C T I O N TM